



Investor Relations

2015

**Over 80% of the energy needs in North America
are produced by fossil fuels.**





The world produces an estimated 2.6 trillion pounds of garbage every year.



Although Carbon Dioxide (CO₂) is needed to trap heat from the sun, an over production can lead to rapid warming, referred to as the Greenhouse Effect.

This has massive health, economic, and social implications.

The Challenge:

Find creative solutions for today's complex environmental problems.

*Better technology for a cleaner world,
and a brighter future*



Company Overview

CONFIDENTIAL

OVERVIEW



 **Founded in 1988**


 **Publicly Traded on NEX**

 **Listed on TSX-V**

 **Trading Symbol: SAY.H**

**Acquisition of Newport Environmental
triggered a new direction for the company (*January 2015*)**

EXECUTIVE TEAM

A hand in a dark suit jacket is pointing towards a network diagram. The diagram consists of several circular icons, each containing a white silhouette of a person. The icons are connected by thin lines. One icon, located in the upper right quadrant, is highlighted with a bright green glow. The background is a blurred image of a person's face, overlaid with a semi-transparent green and blue gradient.

Sparta acquired a multi-disciplined team of seasoned professionals, combining the wisdom of experience with youthful perspective and innovation. The team also has a proven track record in both private and public markets

A team of few individuals, but a network of thousands

OUR MISSION



Finding technologies that provide creative solutions to complex issues...



...that simultaneously reduce carbon fuel consumption...



...and bringing these technologies to market.



OUR MISSION



Sparta Capital plans to remain carbon neutral, and strive toward carbon negative status through innovative products and companies focused on drastically reducing the global carbon footprint

OUR MISSION



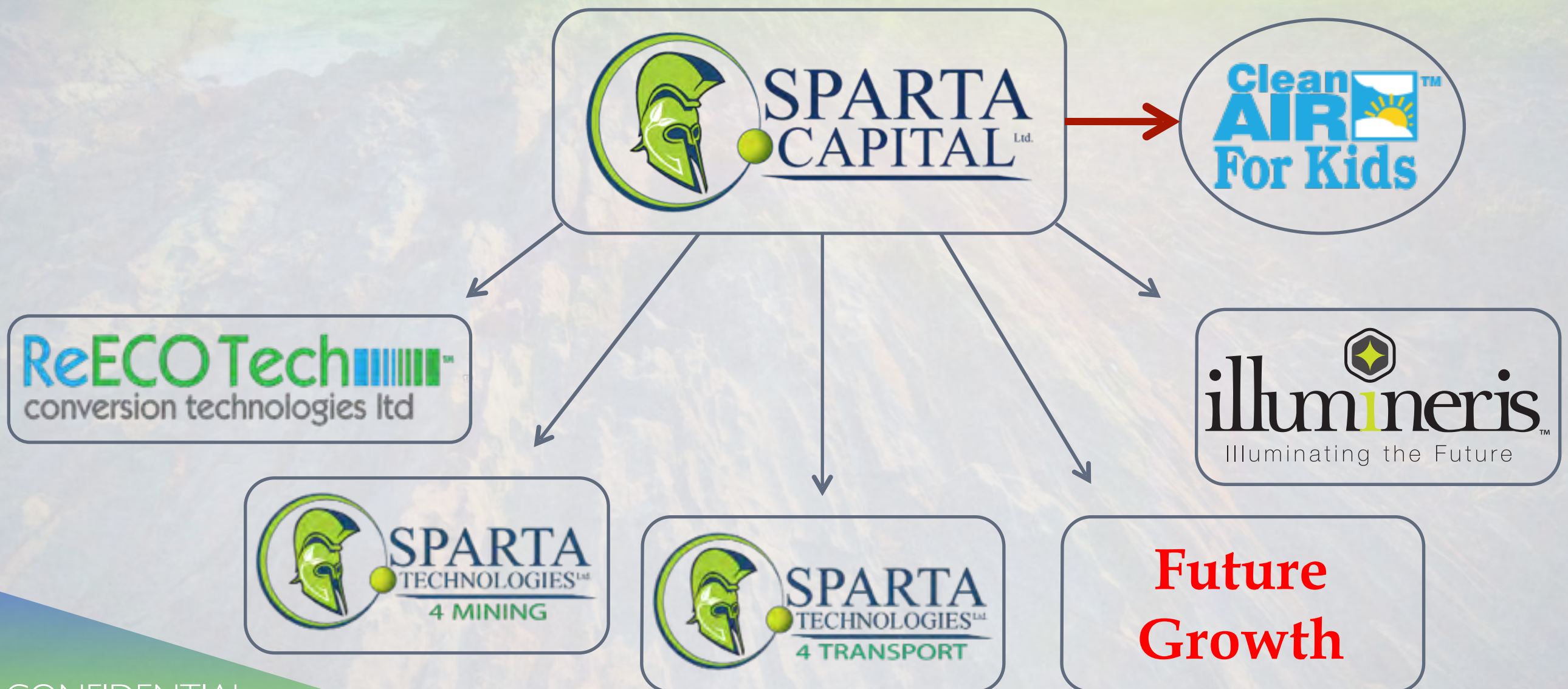
Most importantly, Sparta Capital will monetize the net reduction in carbon credits to help children around the globe, through the Clean Air for Kids campaign



OVERVIEW



Since January 2015 Sparta Capital has developed multiple divisions across a diversity of industries, with an aggressive growth plan for the coming months



INFRASTRUCTURE



We've already implemented a totally integrated ERP-based back office, capable of supporting warehousing/logistics, distribution, manufacturing and integrated financial reporting.

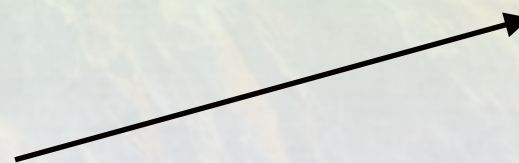
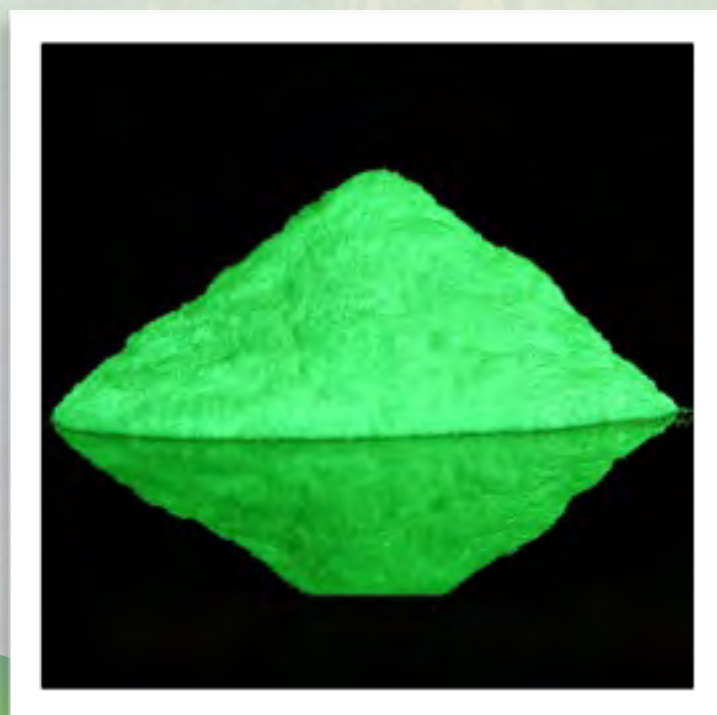


Company Divisions

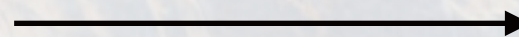



illumineris™
Illuminating the Future

- In North America, photo-luminescent products are one of the fastest growing technologies that directly address energy conservation, environmental initiatives, and safety
- Strontium Aluminate (used in photo-luminescent products) is a solid, odorless, non-flammable, pale yellow mineral that is chemically and biologically inert



Energy
Conservation



Environmental



Safety
Improvements

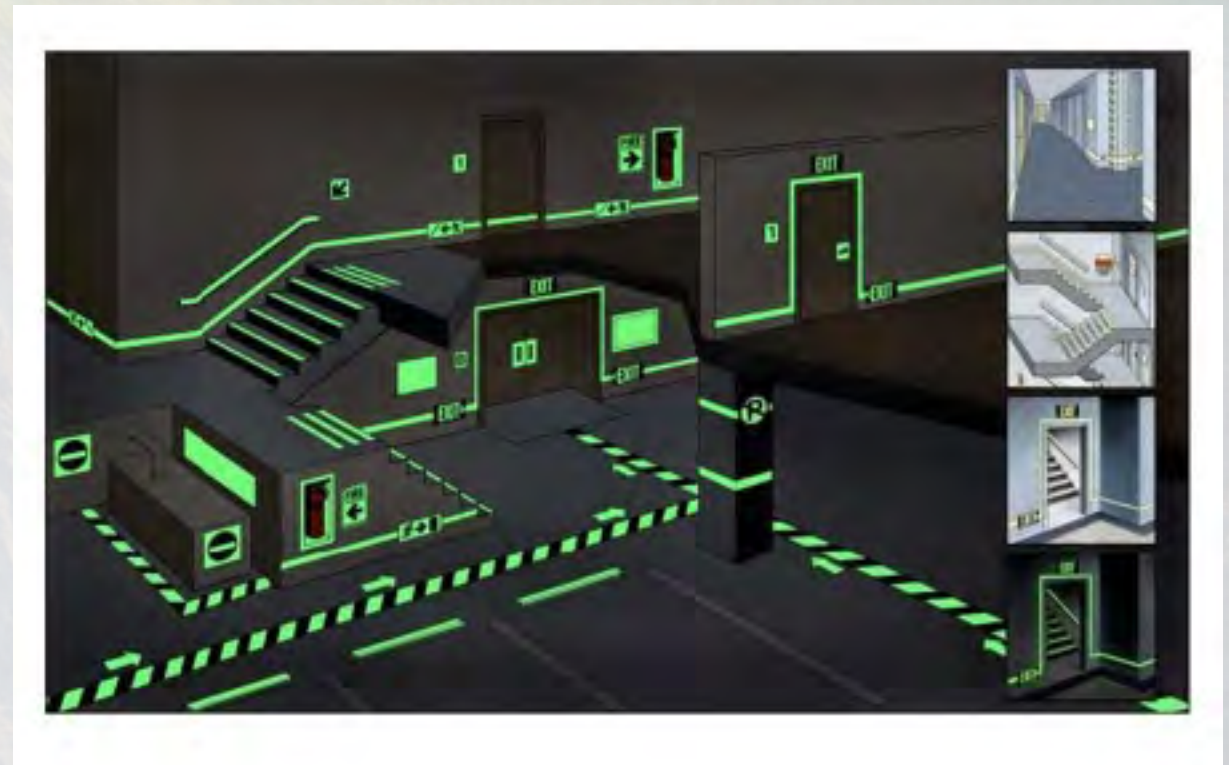
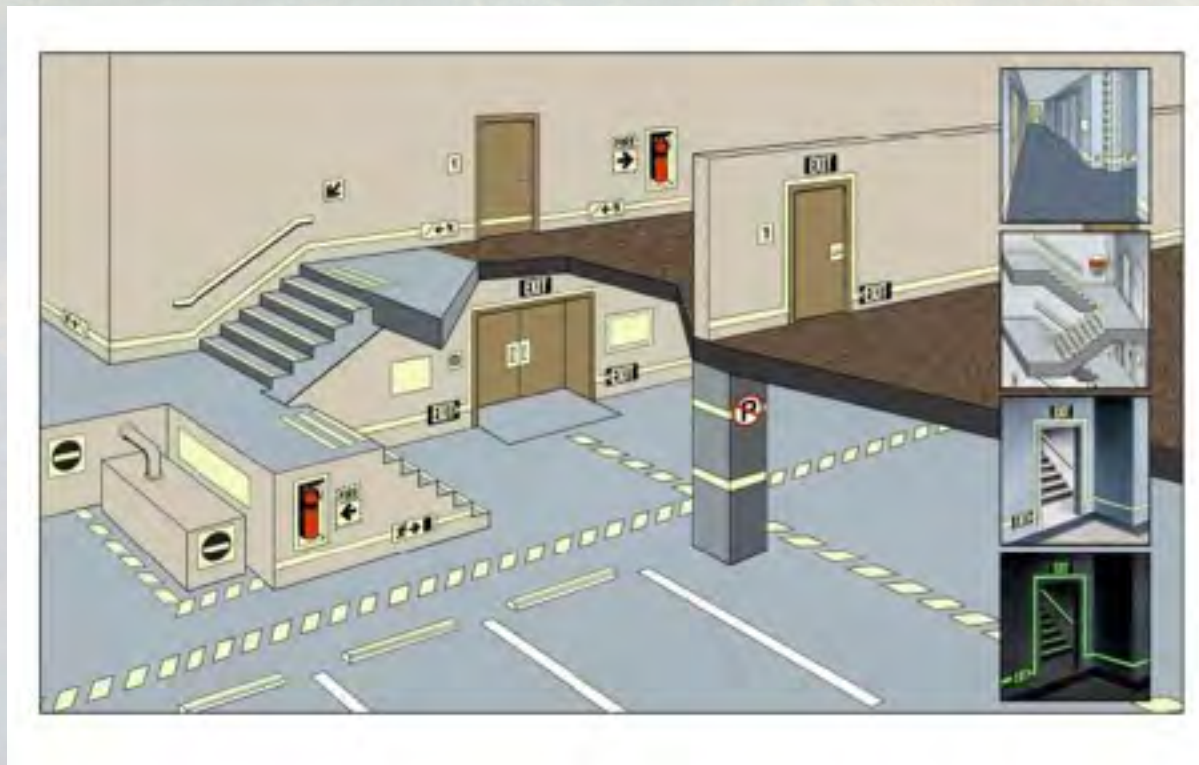
- An industry leader in photo-luminescent safety products
- Illumineris GloBrite® products absorb and emit light without the need for electricity
- Entire buildings, developments, and businesses can benefit from this net reduction in energy usage
- Conforms to hundreds of worldwide standards and codes



- Illumineris has identified opportunity in the market directly related to the ban of incandescent light bulbs
- In 2015 the green Running Man pictogram was adopted throughout Canada as the standard for all new buildings and retrofit applications, in accordance with the International Fire Code (IFC)



- Since 9/11, Egress marking systems, which includes low level green Running Man signage, have become mandatory in many States in the USA



- Project Sales
- Small network of Sales Agents (build to order)
- Typically \$10K - \$500K
- Seldom a bid process
- Gross margin – 55%



The replacement of 12 incandescent signs =
Reduction of 1 Tonne CO₂/year

- Individual & Project Sales
- Large network of Sales Outlets (sold from inventory)
- Any size of order
- Stocking distributor
- Gross margin – 35%



The replacement of 12 incandescent signs =
Reduction of 1 Tonne CO₂/year

GloBrite® becoming an industry standard in such companies as:

- Tim Horton's
- Sobey's
- McDonald's

And we've only just begun...

Tim Hortons

Sobey's



McDonald's

OTHER FEATURE INSTALLATION SITES



**Union Station,
Toronto**



**Hudson Bay Center
Toronto**



Ottawa International Airport

MORE INSTALLATION SITES & PARTNERS

































Just to name a few...

© 2015 Illumineris Inc. All rights reserved

Example Reference



February 25, 2014

RE: PHOTOLUMINESCENT SIGNAGE

In my opinion photoluminescent signage is a product whose time has come. This technology has proven to us to be a very positive solution to exit signage problems. We recently converted the entire airport terminal building to the photoluminescent running man, and plan to move to our parking structure for this upgrade next. The running man has the added benefit of not having to worry what language our international travellers speak; we know the message is being delivered.

Additional benefits are the markings for stair treads, railings, walkways and directional arrows which allows for creating exit paths in large mechanical spaces which have a lot of equipment to navigate around to access an exit door. Especially useful in stairwells also.

We converted our building from LED exit signage which was prone to failure. Very disappointed with the failure rate of the LED technology in exit fixtures. Also when the supplier was contacted to discuss the problem of failure and in two incidences fire and smoke from the fixture, their only concern was how old was the unit. Over two years, no warranty. No concern about what possibly caused the failure.

We recently expanded our multi level parking structure and when we toured the structure last fall after the one year warranty period, we found twenty-three (23) LED exit fixtures had failed. These were replaced under the contract, however that is not the point. This is an unacceptable failure rate.

This is just another reason why in my opinion that photoluminescent technology should be employed for exit signage. The final comment is regarding colour. Green is much easier to see in a smoke filled room, as the current red powered signage tends to blend in with smoke and flames.

Regards, Earl Arcand

Supervisor Electrical Maintenance
Ottawa MacDonald Cartier International Airport



© 2015 Illumineris Inc. All rights reserved. Please do not copy or redistribute.

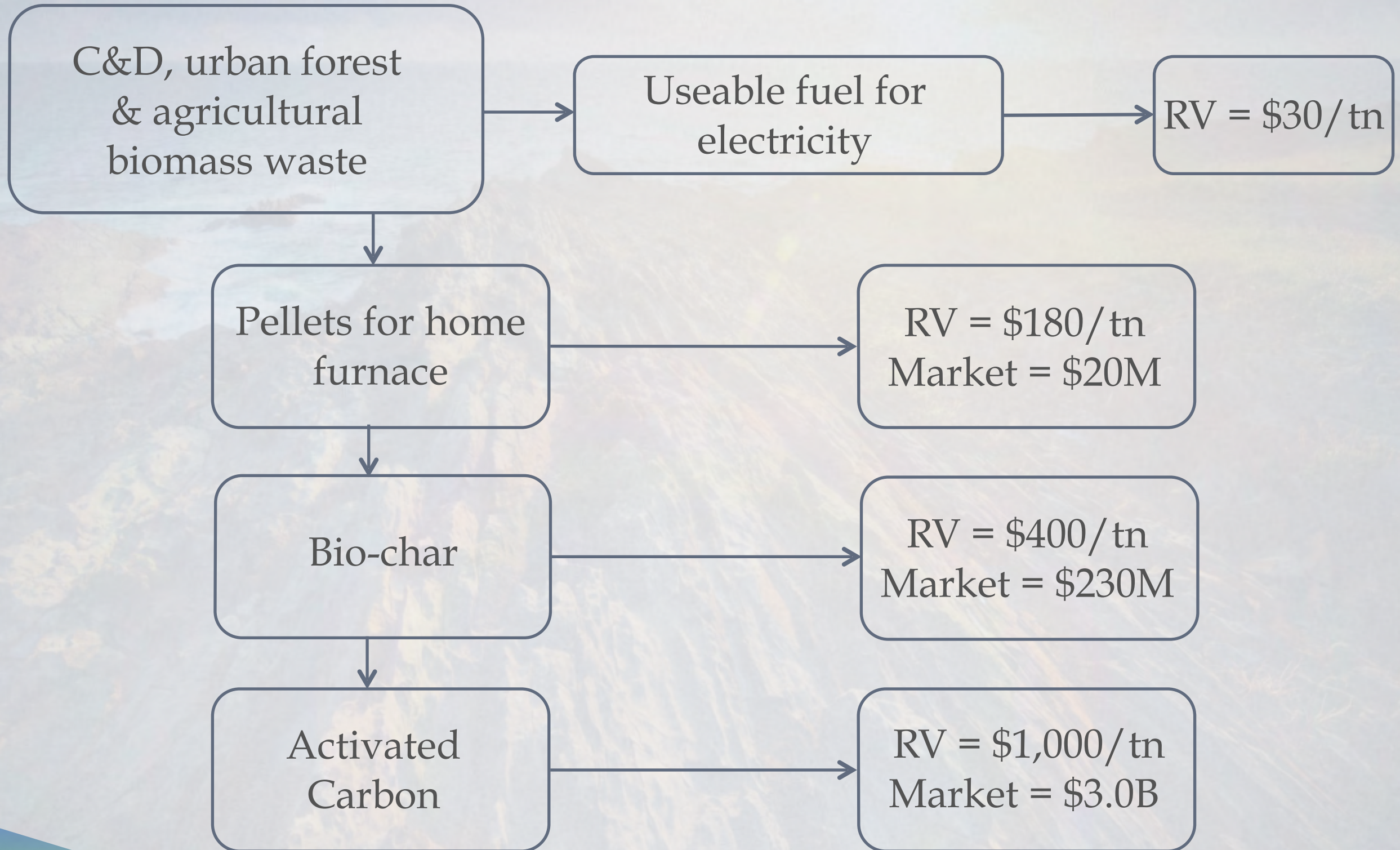


- Photosynthesis is the complex process used by plants and trees to convert light energy from our sun into chemical energy which is later released to fuel the organisms' activities
- During the process, the plant inherently sequesters carbon from the air, converting Carbon Dioxide (CO₂) & water (H₂O) into Carbon chains (fuel) & Oxygen (O₂)

- Sparta Capital's Biomass Conversion division is finding value in global waste production
- Re-Eco Tech specializes in the processing of biomass waste – transforming byproducts from C&D lumber, urban forest and agricultural biomass waste into energy, reducing CO₂ emissions around the globe

*Converting recently sequestered carbon
- NOT billion year old carbon -
into energy.*

- A disposal fee is collected for pick up of waste biomass
- Processing the biomass to minus 6 inch fibre (\$30/Tonne)
- Further processing to minus 3/8th fibre is converted to pellets, for pellet stoves and electrical power generation (\$180 - \$250/Tonne)
- Conversion to biochar for agricultural purposes (\$400/Tonne)
- Conversion to activated carbon for filtering (\$1,000/Tonne)



Currently in development

Sparta Capital assembled a group of complimentary technology developers to produce a battery-powered, electric drive train - to dramatically reduce harmful emissions underground

Currently in development

Transportation is now recognized as the backbone of the North American economy.

Numerous non-powertrain inefficiencies to be addressed - producing significant financial savings and substantial reductions in carbon fuel consumption.



TRANSPORTATION SECTOR DEVELOPMENT

Sparta Technologies 4
Transport was formed to
build on its exclusive
Licensing Agreement for the
TreeFrog Transport
Optimization™ Systems



OTHER OPPORTUNITIES IN DEVELOPMENT



Solar Energy group 1 – Approved innovative technology for home cooling and energy savings

Solar Energy group 2 – Strategic alliance of solar manufacturing and large international projects

High Intensity LED manufacturer – Established Canadian manufacturer to add greater breadth to Illumineris offering

E-Commerce group - revolutionary delivery mechanism to reduce the carbon footprint of home deliveries from online shopping

Sparta Capital is currently developing the products and relationships with these potential future opportunities





We are addressing the key sustainability challenges of our age



With progressive investors, and forward-thinking customers...



All in support of our vision for future generations



**Better Technology
For a Cleaner World
And a Brighter Future**



Thank you for your interest.

Please visit www.spartacapital.com for more information.